



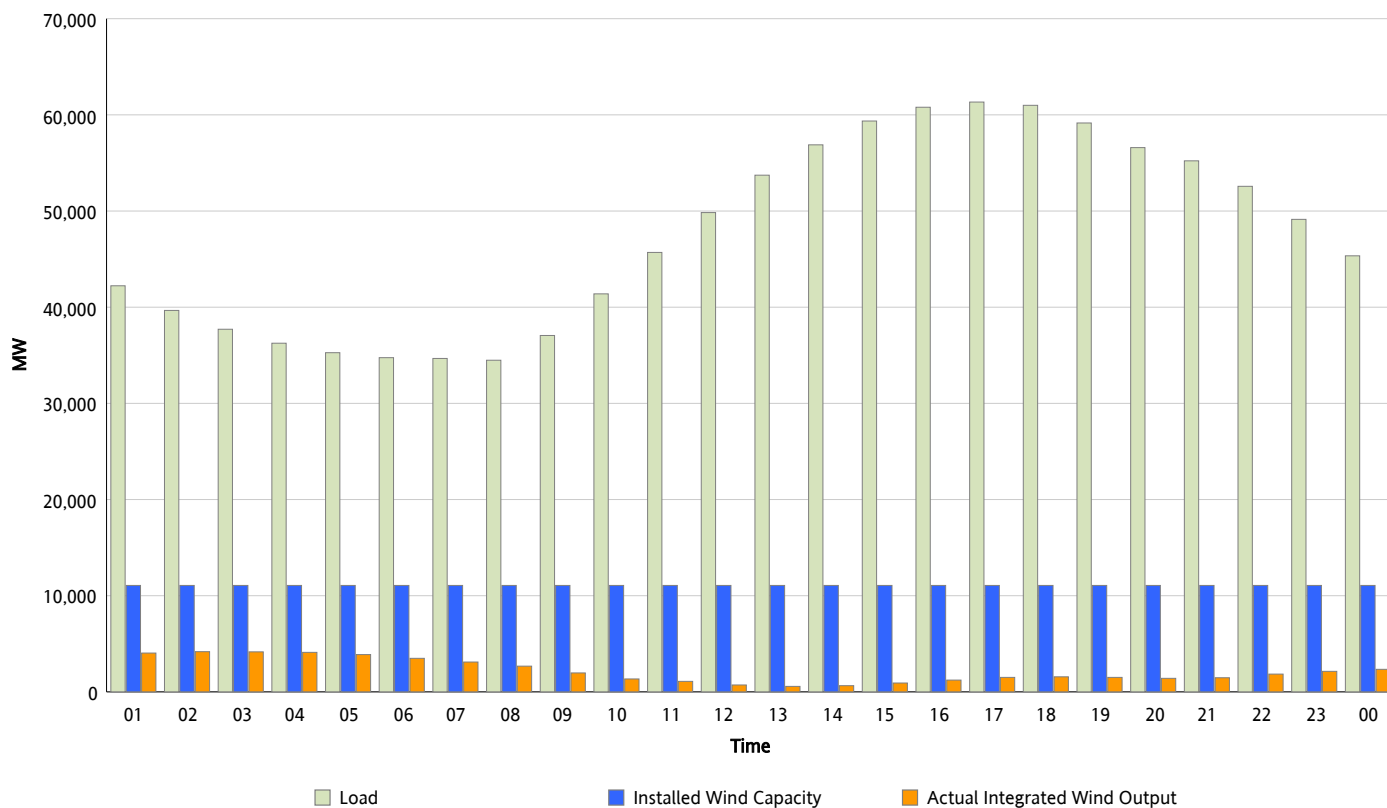
ERCOT Grid Operations

Wind Integration Report : 09/01/2013

Peak Load	61,334 MW
Load Peak Hour (HE)	17
Wind Over Peak	1,507 MW
Wind Record 05/02/13	9,674 MW
Max Wind Value*	4,230 MW
Wind Peak Time	01:47
Wind Integration %	10.82 %

Hourly Average Actual Load vs. Actual Wind Output

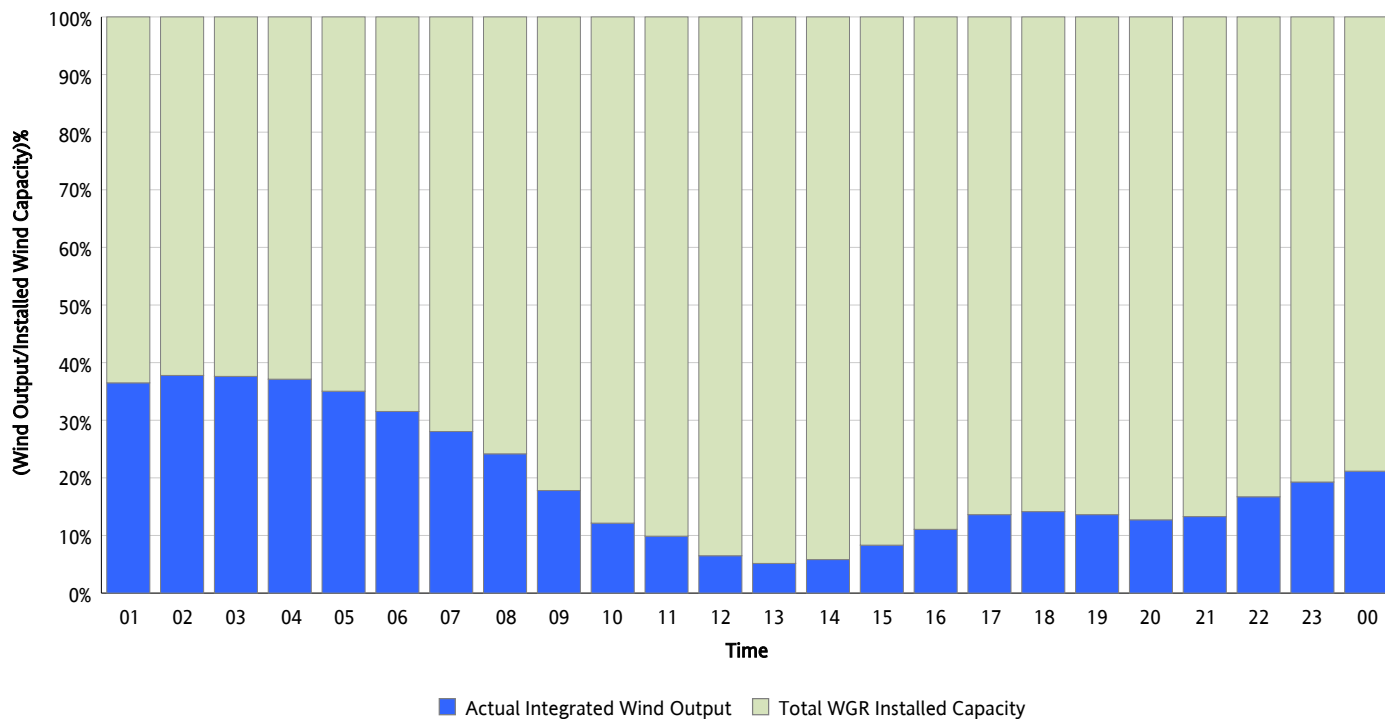
09/01/2013



** Wind Record and Wind Max represent instantaneous values and the rest of the values are integrated over the hour.
Capacity numbers used in the graphs are based on the expected commercial operation date of each Wind Generation Resource.*

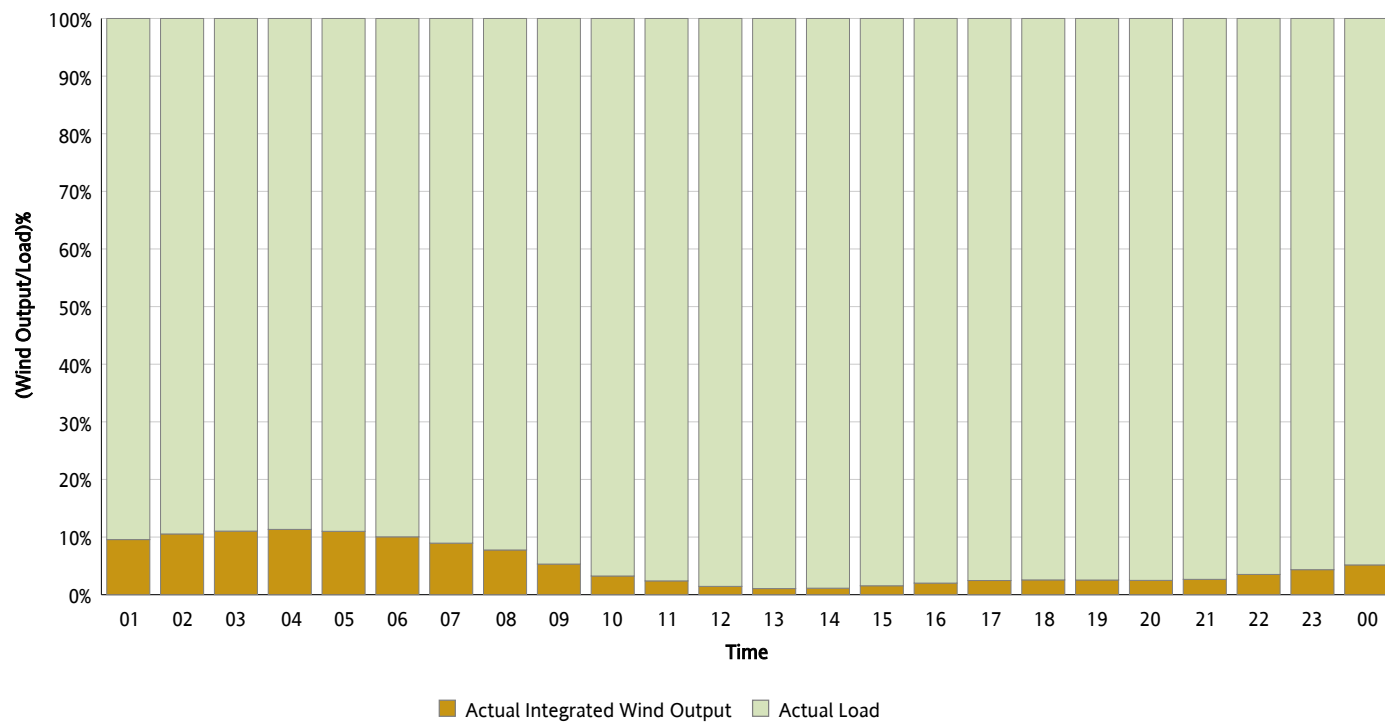
Actual Wind Output as a Percentage of the Total Installed Wind Capacity

09/01/2013



Actual Wind Output as a Percentage of the ERCOT Load

09/01/2013



ERCOT Load vs. Actual Wind Output

08/25/2013 - 09/01/2013

